

ACCESSIBILITY AND TACTILE EGRESS SIGNAGE

1 1/2" ± 1'-0"

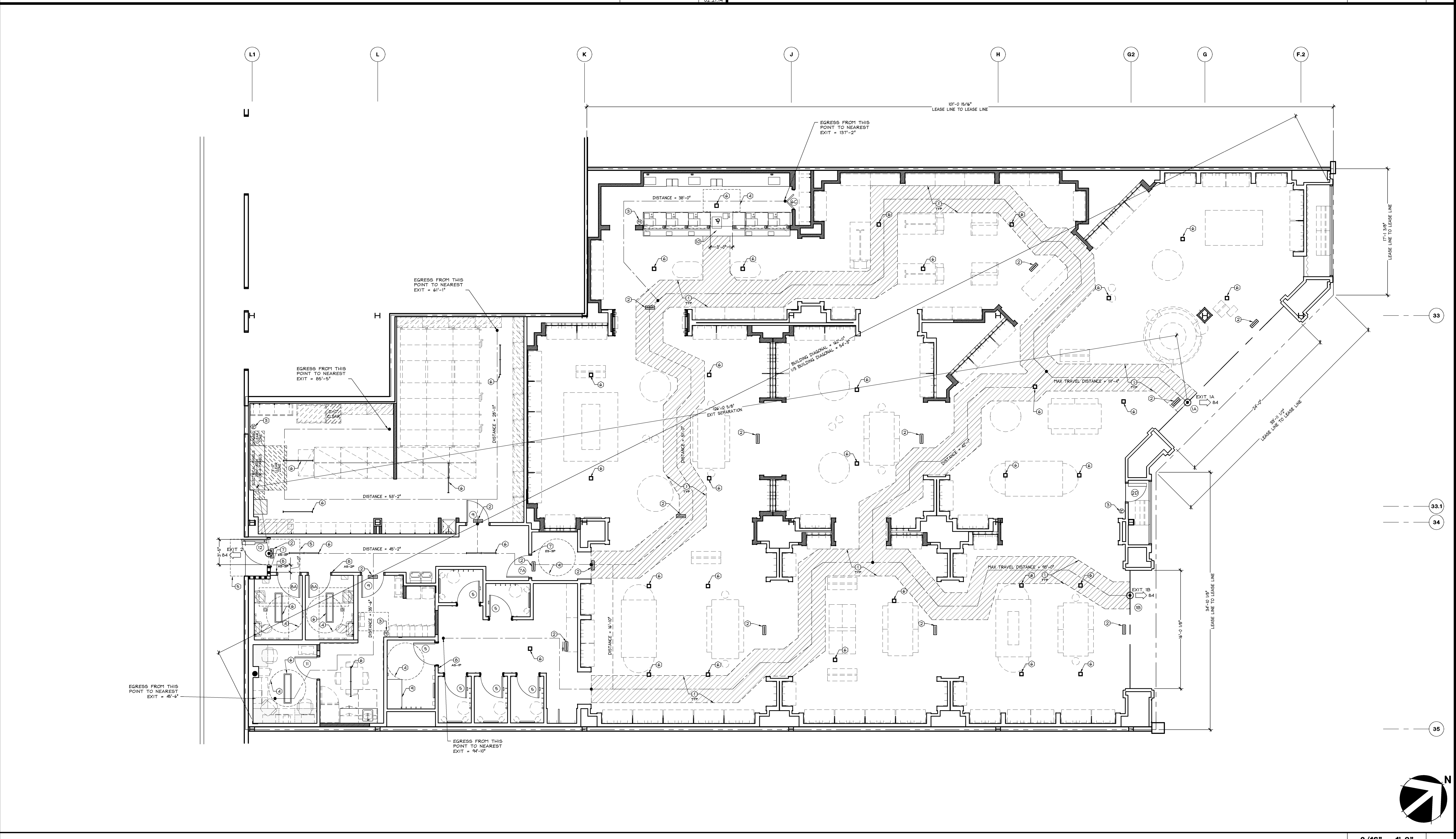
05D-A0004-H00-DETL

M

02/21/14

LIFE SAFETY / ACCESSIBILITY PLAN NOTES AND CALCULATIONS

D



LIFE SAFETY / ACCESSIBILITY PLAN

3/16" ± 1'-0"

A

Stantec
Stantec Architecture Inc.
1383 N. McDowell Blvd., Suite 250
Petaluma, CA 94954
Tel: 707.765.1660 Fax: 707.765.9908
www.stantec.com

Limited brands
LIMITED STORE PLANNING, INC.
d/b/a STORE DESIGN & CONSTRUCTION
Three Limited Parkway • Columbus, Ohio 43230
Telephone: 614.415.7000 • Fax: 614.415.7349

PROJECT INFORMATION:
010500133
VICTORIA'S SECRET
QUAIL SPRINGS MALL
SPACE NO. 119
2501 WEST MEMORIAL RD.
OKLAHOMA CITY, OK 73134
SCOPE: OPTIMIZATION
DESIGN TYPE: NMA/FORUM A41
PROJECT #: 00060919
A/E PROJECT #:
R131SG/142F9
2007684006

REVISIONS:

REQUIRED BY:	DATE:

ELITE CONSTRUCTION GROUP
LAKE JACKSON, TX
PHONE: 979.285.0715
NOTE: THESE PRINTS HAVE BEEN
REDUCED BY 50 PERCENT SCALE
WILL BE 50 PERCENT OF WHAT IS
NOTED ON PLANS

DATE ISSUED: 05.30.2014
DESIGNED BY: KW
DRAWN BY: MS
CHECKED BY: DB/BV

LIFE SAFETY / ACCESSIBILITY PLAN

DRAWING NUMBER:
A00.4